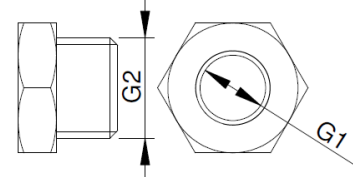
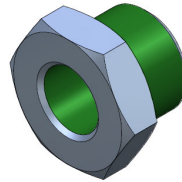
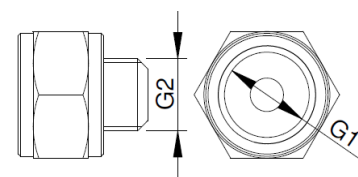
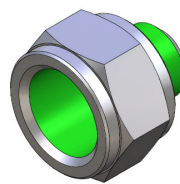


**CA.08.14**
**PNEUMATIC**
**. Reducer (parallel)**
**. Reduzierstück zylindrisch**

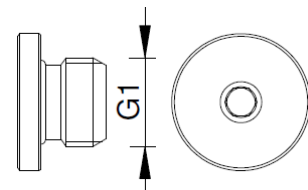
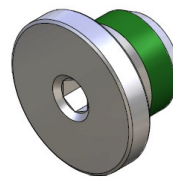
Article no. Artikelnr.	G1	G2	Weight Gewicht
CA.08.14.001	M5	G1/8	8 g
CA.08.14.002	M6	G1/8	8 g
CA.08.14.003	G1/8	G1/4	11 g
CA.08.14.004	M6	G1/4	13 g



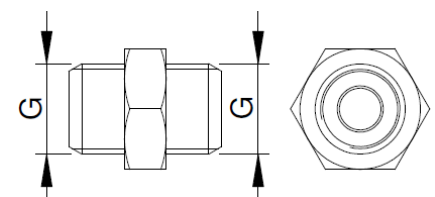
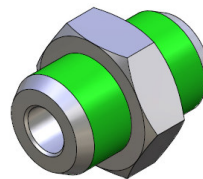
Article no. Artikelnr.	G1	G2	Weight Gewicht
CA.08.14.018	G1/8	M5	7 g
CA.08.14.019	G1/4	G1/8	14 g


**. Male plug (parallel)**
**. Gewindestopfen zylindrisch**

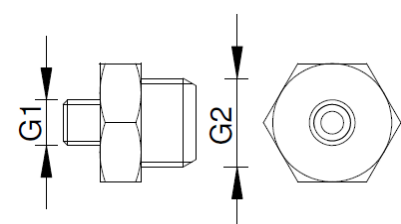
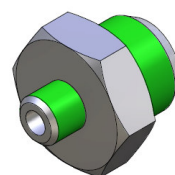
Article no. Artikelnr.	G1	Weight Gewicht
CA.08.14.013	M5	3 g
CA.08.14.014	G1/8	4 g
CA.08.14.015	G1/4	7 g


**. Nipple (parallel)**
**. Doppelnippel zylindrisch**

Article no. Artikelnr.	G	Weight Gewicht
CA.08.14.021	M5	2 g
CA.08.14.005	G1/8	9 g
CA.08.14.006	G1/4	15 g


**. Nipple (parallel)**
**. Doppelnippel reduziert zylindrisch**

Article no. Artikelnr.	G1	G2	Weight Gewicht
CA.08.14.011	M5	G1/8	8 g
CA.08.14.012	G1/8	G1/4	15 g



For more information and to check the drawings, please visit our website

Für weitere Informationen und Blick auf die Zeichnungen, bitte besuchen Sie unsere Website